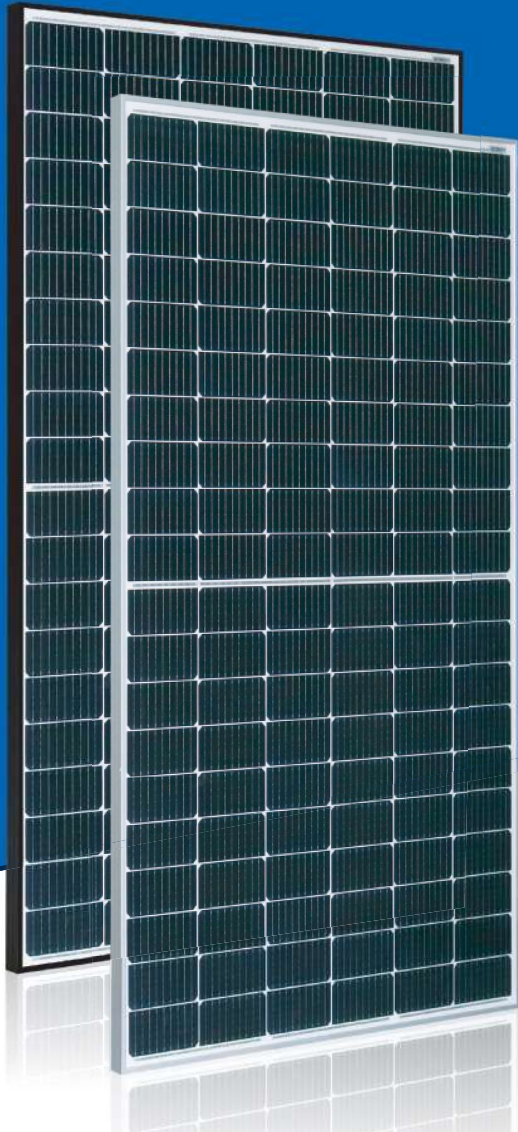


ASTRO 4 Semi

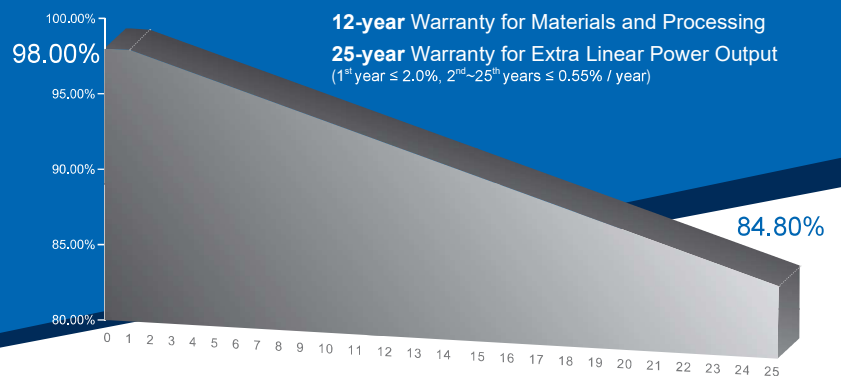
Create Sustainable and Efficient Green Energy



370W~380W

Monocrystalline PV Module

CHSM60M-HC Series (166)



KEY FEATURES



OUTPUT POSITIVE TOLERANCE

Guaranteed 0~+5W positive tolerance to ensure power output.



INNOVATIONAL HALF-CUT TECHNOLOGY

Better shading tolerance, higher reliability.



INNOVATIONAL MULTI-BUSBAR TECHNOLOGY

Higher light absorption, lower risk of microcrack.



SUPER PERC+ CELL TECHNOLOGY

Higher module power and module efficiency, lower power degradation.

COMPREHENSIVE CERTIFICATES



Designed for the Australian Market



ASTRONERGY
A CHNT COMPANY

ELECTRICAL SPECIFICATIONS

STC rated output (P_{mpp})	370 Wp	375 Wp	380 Wp
Rated voltage (V_{mpp}) at STC	33.98 V	34.28 V	34.51 V
Rated current (I_{mpp}) at STC	10.89 A	10.94 A	11.01 A
Open circuit voltage (V_{oc}) at STC	40.75 V	41.05 V	41.34 V
Short circuit current (I_{sc}) at STC	11.35 A	11.42 A	11.49 A
Module efficiency	20.3%	20.6%	20.9%
Rated output (P_{mpp}) at NMOT	275.9 Wp	279.6 Wp	283.4 Wp
Rated voltage (V_{mpp}) at NMOT	31.68 V	31.96 V	32.18 V
Rated current (I_{mpp}) at NMOT	8.71 A	8.75 A	8.81 A
Open circuit voltage (V_{oc}) at NMOT	38.31 V	38.59 V	38.87 V
Short circuit current (I_{sc}) at NMOT	9.13 A	9.19 A	9.24 A
Temperature coefficient (P_{mpp})		- 0.34%/°C	
Temperature coefficient (I_{sc})		+0.035%/°C	
Temperature coefficient (V_{oc})		- 0.27%/°C	
Nominal module operating temperature (NMOT)		41±2°C	
Maximum system voltage (IEC/UL)		1500V _{DC}	
Number of diodes		3	
Junction box IP rating		IP 68	
Maximum series fuse rating		20 A	

* Measurement tolerance +/- 3%

STC: Irradiance 1000W/m², Cell Temperature 25°C, AM=1.5

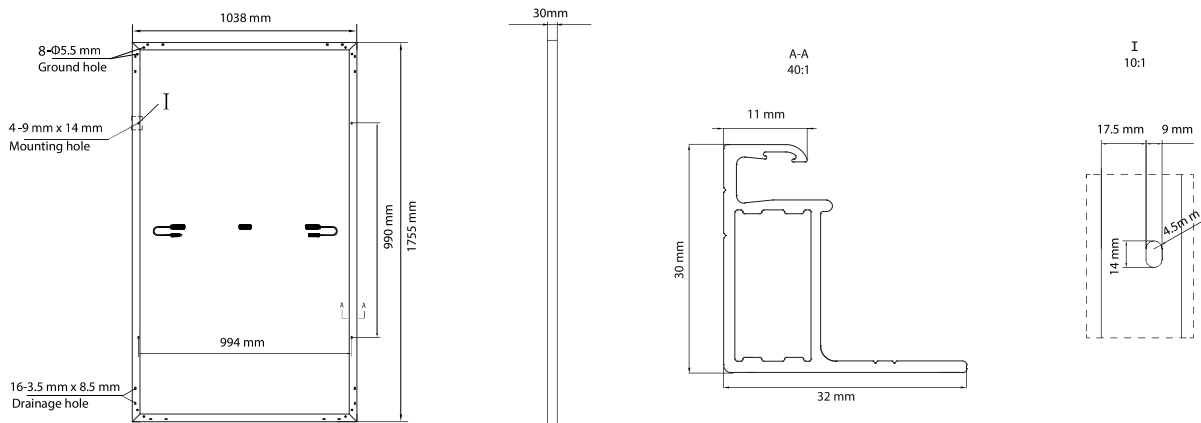
NMOT: Irradiance 800W/m², Ambient Temperature 20°C, AM=1.5, Wind Speed 1m/s

MECHANICAL SPECIFICATIONS

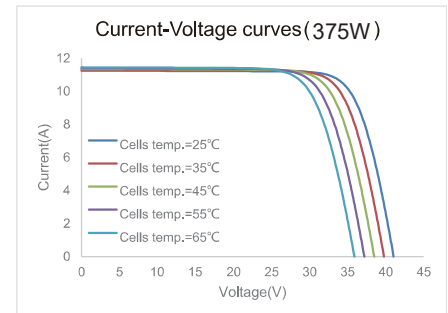
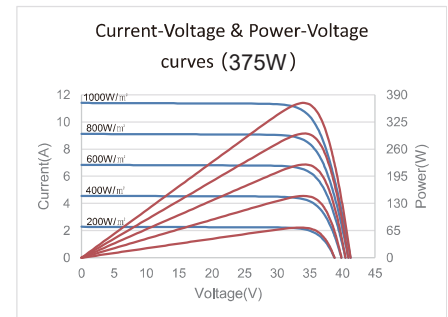
Outer dimensions (L x W x H)	1755 x 1038 x 30 mm
Frame technology	Aluminum, silver or black anodized
Front glass thickness	3.2 mm
Cable length (IEC/UL)	Portrait: 300 mm Landscape: 1200 mm
Cable diameter (IEC/UL)	4 mm ² / 12 AWG
① Maximum mechanical test load	5400 Pa (front) / 2400 Pa (back)
Fire performance (IEC/UL)	Class C (IEC) or Type 4 (UL)
Connector type (IEC/UL)	HCB40 / MC4-EVO2

① Refer to Astronergy crystalline installation manual or contact technical department.
Maximum Mechanical Test Load=1.5×Maximum Mechanical Design Load.

MODULE DIMENSION DETAILS



CURVE



PACKING SPECIFICATIONS

① Module Weight	19.5 kg
② Packing unit	36 pcs / box
Weight of packing unit (for 40'HQ container)	743 kg
Number of modules per 40'HQ container	936 pcs

③ Tolerance +/- 1.0kg
④ Subject to sales contract



CHINT SOLAR(HONGKONG) COMPANY LIMITED

ADD: 5F, STANDARD CHARTERED BANK BUILDING 404A DES VOEUX ROAD CENTRAL HK
TEL: +86 571-5603-2340
FAX: +86 571-5603-2383
Email: rsj@astronergy.com

Declaration Statement

Hereby certify that Achievers Energy Group Pty Ltd. (Here under referred to as “Achievers”) is a strategic partner of CHINT SOLAR (HONG KONG) COMPANY LIMITED (Here under referred to as “Chint”)in Australia. For 60 Cells standard mono PV modules CHINT sold and delivered to Achievers since 5th Apr, 2021, Chint commits to offer 3 years product warranty in addition to the standard 12 years product warranty, which means all Chint 60 cells standard mono PV panels provided by Achievers in Australian markets have 15 years product warranty.

28. 04.2021

CHINT SOLAR (HONG KONG) COMPANY LIMITED.

